

Please sit in this order:

Left

A-E Upsilon
F-J Omega
J-N BK

Left Center

A-C Eta/Iota
D-G Zeta
H-K Alpha

Right Center

A-D Phi
D-G Delta
H-K Epsilon

Right

A-E Tau
F-J Sigma
J-N TG

ALPHA PHI OMEGA

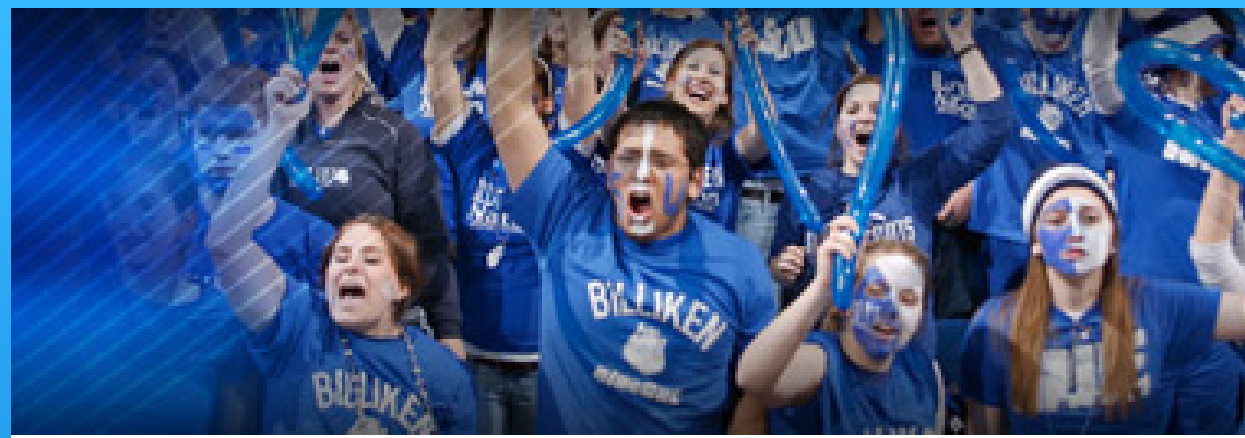
Chapter 11.02.2010

Finance

VP: John Kinsella

AVP: Julia Chick

Chaifetz FUNDRAISING! Men's Basketball Games



THIS Saturday, November 6th

How Many: 2 people, **MUST** be 21 or older (work beer stand)

When: be there at 4:15pm, doors open at 5pm,
game is at 7pm

Other Dates Coming Up! (need 8-10 volunteers)

- Friday, November 12th
- Monday, November 15th
- Saturday, November 20th

SIGN UP ON the 'SERVICE THE CHAPTER' PAGE

Pledge Education

VP: Alison Orr

AVPs: Shannon Russell and Liz Vonderhaar

SERVICE HOURS AND FELLOWSHIP

- PLEDGESSSSS!!!
- ACTIVATION IS COMING UP, LIKE SOON.. WHICH MEANS 14 DAYS=2 WEEKS
 - 15 HOURS OF SERVICE NEEDS TO BE COMPLETED IN 2 WEEKS! (14 DAYZZ)
 - ATTEND 2 FELLOWSHIP ACTIVITIES; ALSO DUE IN 2 WEEKS/14 DAYS

DO IT, NOW.

Pledge Service:

KEEN Sports

Nov. 14th

1:00- 4:15

**SUPER EASY TO GET
HOURS!!!**

Sign up online. Like always.

Fellow-Service-Ship

Saturday, November 13th (as in NEXT Saturday)

Riverfront Trail Cleanup- 9 am to Noon

*sign up online for service!

Fellowship after service- Bread Co. (Panera for non-STL ppl)

*sign up for Fellowship in Lobby with Alex and Tori

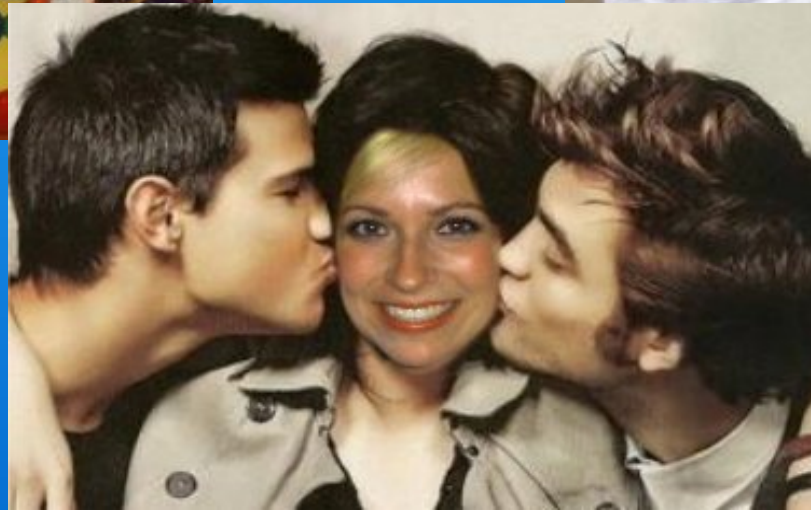
Episodic Service



The Episodic Team...



...with their best buds



VP: Molly DuBro
AVPs: Jasmina Vajzovic and Megan Scherer

Attention Site Leaders

If you have been chosen in the past to be a site leader but never sent the information to us or fulfilled the duties that were required, you may not log the extra half hour of service.

If you have logged the extra half hour without fulfilling the duties they will not be counted.

Site leader requirements are:

- Take attendance
- Email serveAPO@slu.edu with any names of people who did not show up
- Inform the VP or AVP's of any other information that is necessary regarding the site (e.g. if you stayed longer or left early)



A Word on the Hours Log...

If you don't see your hours on the log and you are getting a little anxious, don't be!

Your submissions are saved in a Google Doc and we check them and move them into the published log every Tuesday during our Office Hours.

If you don't see them, please don't email us or double log things because it makes the process longer.



ATTENTION. GET OUT YOUR PHONES.

Operation Brightside needs your help!

Text 103342 to Pepsi (73774)!

Operation Brightside landed in the top 100 in October for the Pepsi Refresh Project, so they get a second chance to win the big prize!

You can vote once a day online and text once a day.

The link will be in the weekly mailer.



11/4 YWCA Leadership Conference

When: Thursday, November 4th 2010

What: Please join us for the YW-Teens Young Women's Leadership Conference. **Various tasks and shifts**

Where: Renaissance Grand Hotel, 800 Washington Ave.,
63101

Time: different shifts all day

11/5/10 SUFApalooza

When: Friday, November 5th, 2010

What: Volunteers are needed to help with registration, check-in and later for clean-up. You will get to see all the performances for free!

Time: 2 shifts
6-10pm and 10pm - midnight

Where: BSC Ballrooms

11/6/10 Race for Home

When: Saturday, November 6th

What: Volunteers are needed to assist with finish line, registration, directing traffic, passing out water on the course to participants etc.

Time: 7am - 11am

Where: 21 O'Fallon Street St. Louis, MO 63104

11/6/10 Operation Brightside

When: Saturday, November 6th, 2010

What: Help put in new mulch at Lake Louie!

Time: 9am - noon

Where: Lake Louie

11/7/10 Health Resource Center

When: Sunday, November 7th, 2010

What: Help sanitize equipment, vacuuming and general cleaning tasks

Time: 10am to 1pm

Where: We are located in the basement of Saint Augustine Church at 1371 Hamilton Ave. Saint Louis, MO 63112. From Hamilton, turn west on Romaine and park. Our clinic is on the left.

(The door to the clinic is behind the church)

11/8 - 11/11 CLP Phonathon

What: Student volunteers will place calls to fellow classmates to educate them on the importance of philanthropy and support of class gifts to SLU

Where: On Campus! In DuBourg Hall

Time:

Shifts: 6-9pm

Number needed: 10 for each shift

11/12 Campus Kitchen Food Drive

When: Friday, November 12th, 2010

What: We need volunteers to help pick up food from different departments around the university and sort it in the kitchen

Time: 1 hour shifts from 12pm-5pm

Where: on campus

Number of volunteers needed: 2-3 per shift

Next Week: Food Drive!!!

Please bring Thanksgiving related canned foods next week
3 items = half hour of service (max of 1 hour)

We need:

Turkey (frozen and cooked)

Canned yams, potatoes etc

Stuffing

Green Beans

Etc.

FULL LIST OF ITEMS NEEDED WILL BE IN THE WEEKLY MAILER

Membership

VP: Dougle Gentle

AVP: Andrew Schroeder



APO Olympics Results

1st Place: Eta/Iota (74 points)

2nd Place: Alpha (69 points)

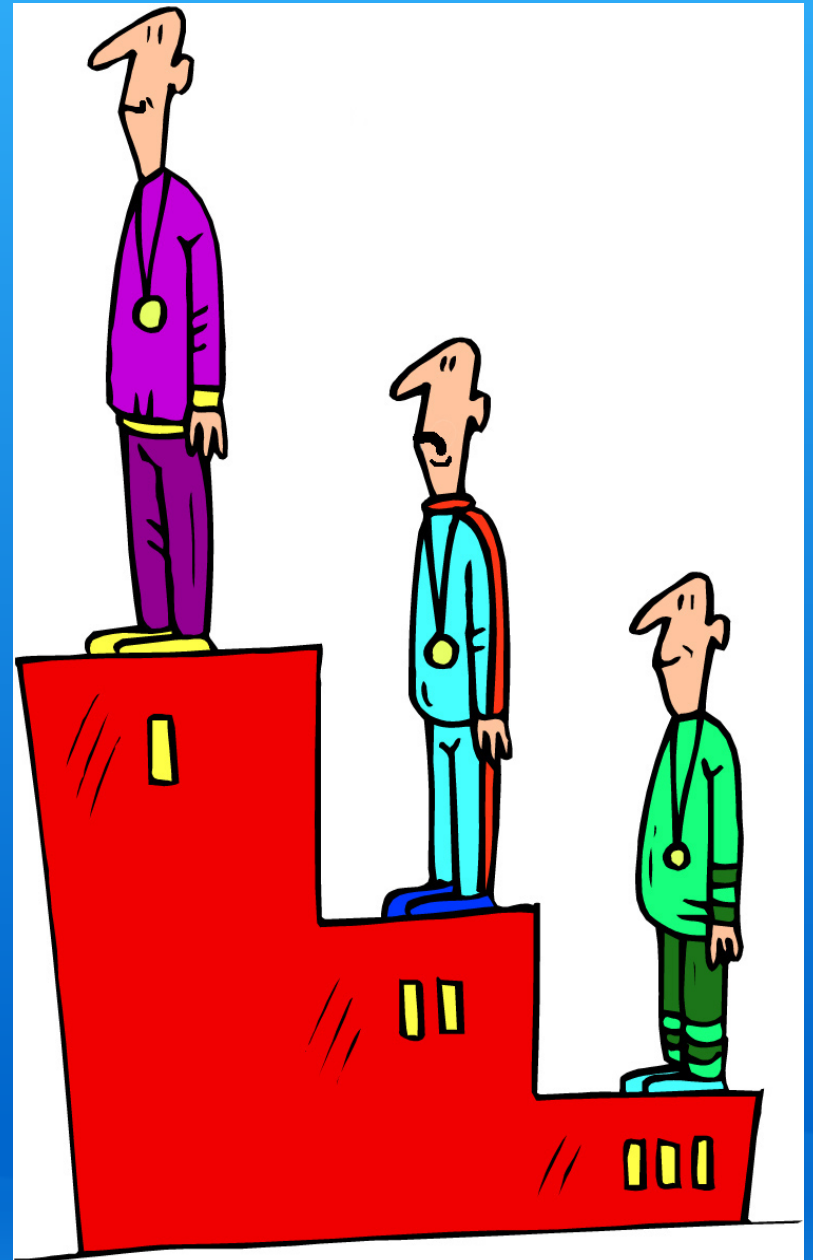
3rd Place: Omega (66 points)

Honorable mention:

Tau (65 points)

Theta/Gamma (64 points)

Upsilon (64 points)



Membership Stuff

Don't forget you need a total of 25 hours by _____

- At least 10 must be episodic or continuous
- No more than 5 can be service to the chapter

You must attend at least 2 fellowship activities

You can't miss more than 3 meetings

Must attend MADD - If given excused absence must attend make up site (any 5 hours of Episodic Service)

Continuous Service

VP: Perry Cole
AVP: Joanna Joye

Service Opportunity On Campus!

Students are needed to come shelter the homeless at College Church this winter.

Duties will include a variety of tasks including greeting guests, staying as an overnight innkeeper, setting and cleaning up, and visiting with the guests.

Times vary.

There are two info sessions.

- November 7, 11:30-1:00
- November 17, 7:00-8:30

If you have any questions, feel free to email Ben Smyth at smythbk@slu.edu by November 8th.

Public Relations

VP: Jen Long
AVP: Justin Mathes

T-Shirt Voting Ends TONIGHT!

The Awkward Moment



Thanks to everyone who voted on their favorite t-shirt design!

Winner will be announced in the near future.

Fellowship!!!

VP: Geoff King

AVPs: Meredith Franklin and Kristin McGuire

AcTiVaTiOn DaNcE



Saturday November 20th

Tickets cost \$10, starting next meeting.

Soccer

SO..... We won 9-0..... No Joke....

Shipp scored with his heel while his back was to the goal.
B.Wall scored with :01 on the clock.

Next Game: Sunday 11/7 @ 12:40pm



Fellowship Log

Please log your fellowship events on the APO website!
Currently, 122 Active and 124 pledge members have not logged fellowship.

Recently added to the fellowship log:

- TKE Pumpkin Carving
- APO Olympics
- Indoor Soccer intramural game

Pledges, remember "rush week" events DO NOT count toward the requirement!

Support APO!! A new Fellowship

1) Support a fellow APO-er by emailing us at...

sluapofellowship@gmail.com

2) Get event approved, & we will present it at the meeting

3) **TAKE PICTURES**

EXAMPLE

1) Dear the lovely Geoff, Meredith, and Kristin,

My buddy, Prashanth Somasundaram (a fellow brother), is singing in the Astha concert this Saturday at 7:00. I would like to be site-leader for this event. We would meet at 6:40 in front in front of the Business School.

Yours fondly,
Kristin

2) We will present it at the meeting

3) ...Take pictures

Fellowship!!

Astha Concert this Saturday at 7:00 (in the AB auditorium)!!

Meet Kristin McGuire at 6:40 in front of the business school

Tickets are \$5 ahead of time and \$7 at the door... so get them before-hand in the BSC!



New! Interfamily Fellowship

Each week, we will randomly choose two family names out of a bucket.

The two families chosen have 2 weeks to do an activity together.

Ex: kickball/dodgeball game, group dinner, TV show watch party, etc.

Upcoming Fellowship Events!

The Office - Thursday 11/4 @ 8 pm

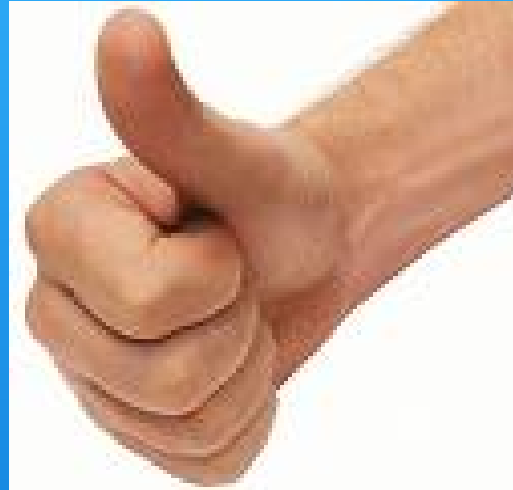
The Darkness - Friday 11/5. Meet in front of Marchetti West

at 7pm. Cost: \$20 at the door

Indoor Soccer game - Sunday 11/7 @ 12:40pm

Activation Dance - Saturday 11/20

LEADER OF THE BROS!



"Baby, you're a FIREWORK!" -Katy Perry

VP: David Courtney
AVP: Lisa Kinsella

1st-Ever PLEDGE RETREAT!

FOR THOSE ATTENDING!

- Meet in the Marchetti Front Parking lot at 11:30 AM on Saturday
- Saturday, November 6- Sunday, November 7 10:30 AM
- Remember: Toiletries, Bedding, Games, Cards
- If you have just signed up, **PAY** me in the back after the meeting.
- Watch your e-mails; if you can drive, **PLEASE VOLUNTEER**
- **GET PUMPED!!**

Leader of the Bro's!

Raina Kulkarni



Chaplainship

Martina "The Noise" Boyter
Drew "The Funk" Tigges

WHO DAT NEOPHYTE???

Bombay, Singapore, New York City, Bharatnatyam, Dance,
Bangles, Greens, Purples, Blues, Trying to Be Eco Friendly,
Second Hand Bookstores, Sunflowers, Txtspk, Coffee shops,
Parks at Night, Being Driven Around, Decor, Being Touristy,
Painting Paper Plates, Black and White Photography, Photo
Booths, Reading, Irony, Fabric, Shakespeare, Bursting Into
Song, Flea markets, Beaches, Magazines, Creating Nicknames,
Biology, Economics, Rain Storms, Adventures, Polaroids,
Shoes, Trampolines, Silver, Cliches, Kitsch in Moderation,
Kittens, Time Capsules, Attics, Backyards

RAINA KUKLARNI!!!!



WHO DAT NEOPHYTE???

SLU Class of 2013 (Marketing!)

34.5

Does not allow strangers to creep on her Facebook...

KATIE VERKRUYSE



WHO DAT NEOPHYTE???

Eta Iota Family Members

They won APO Olympics.

And are very friendly.



Toolbox Awards

For the pledges...

Next week's family theme is:

BACKWARD'S DAY! !YAD S'DRAWKCAB

and as always, family time is a surprise...

Shameless Plug

DCOURTN3@SLU.EDU

Relay for Life KICKOFF!!

- TOMORROW, Wednesday, November 3rd
- Caramel apples + toppings
 - Pizza
 - Fitz's Root Beer
 - A performance by Xquizit
 - Information about SLU's Relay For Life event

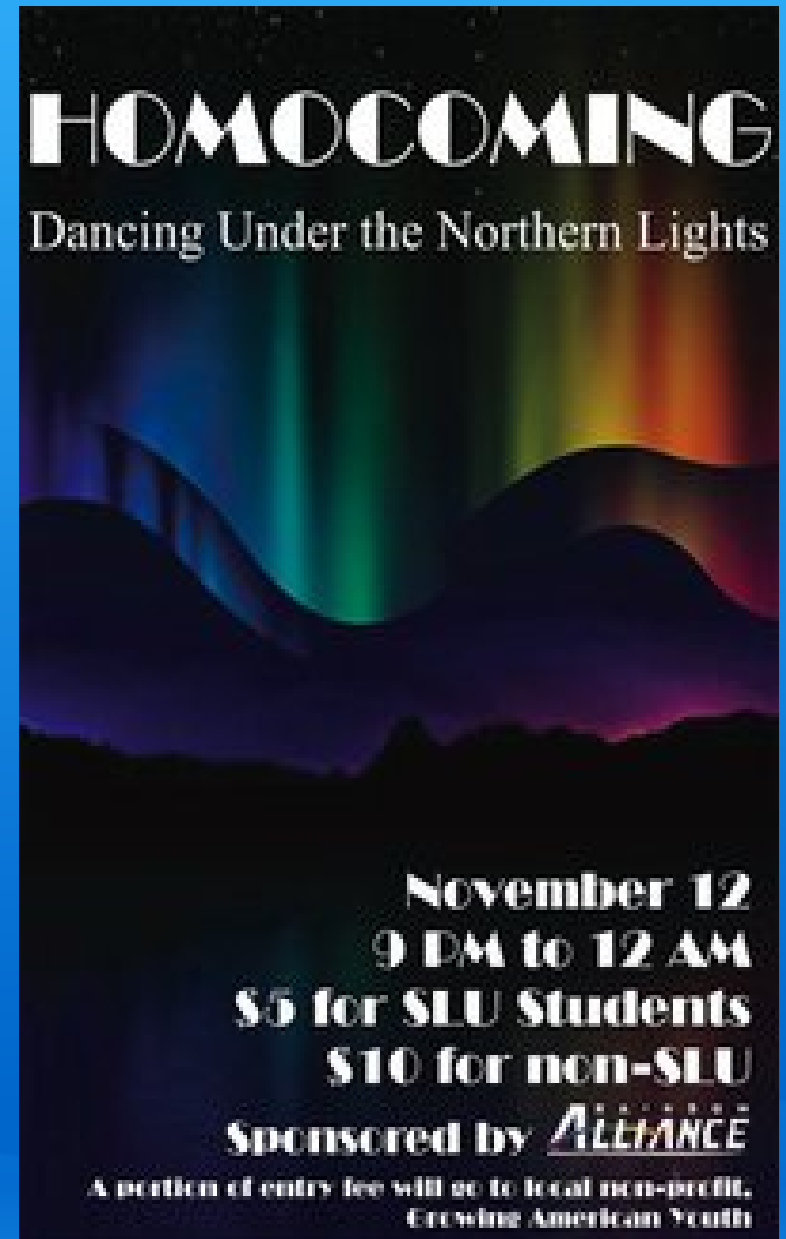
Did we mention it's all FREE? Come check it out!

SUFA-Palooza!

- THIS FRIDAY, November 5th
- BSC Ballrooms
- Opens at 6:30 pm
- First performance at 7:30 pm
- All proceeds going to the school in GHANA!

Rainbow Alliance HOMOCOMING

- FRIDAY, NOVEMBER 12
- WEST PINE GYM
- 9 PM-12 AM
- All proceeds are going to non-profit GROWING AMERICAN YOUTH



NOTE FOR THE ZETA FAMILY:

- If the Zeta family wants their flag back that they carelessly left in the grass at APO olympics, they must bake the Epsilon family 3-DOZEN chocolate chip cookies and cupcakes with the letter E on the frosting.
- Oh and they need to grovel when presenting us with our treats.
- AND FEED US.
- THANKS!
- In Leadership, Friendship, and Service,
Epsilon.

Toast Song

Here's to Alpha Phi Omega, loyal bothers we,
True to self and to each other, firm in loyalty.

Daily working, daily striving, ever more to be,
Men of Alpha Phi Omega, our fraternity.

Brothers clasp the hands of brothers, strong the circle we,
Ever mindful, ever serving all humanity.

Now we raise our grateful voices, in our song to thee,
Men of Alpha Phi Omega, may we always be.